



**The Skills and
Business Hub**

Prospectus

June 2025

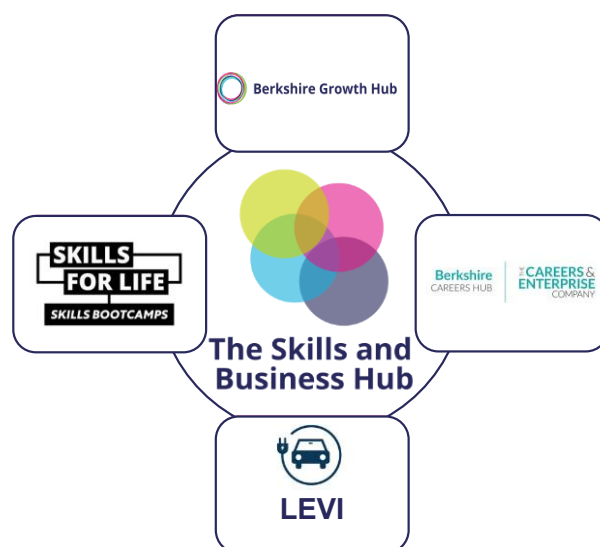


Introduction to The Skills and Business Hub

The **Skills and Business Hub** is a small **independent, not for Profit** company employing **25 staff** and based in **Berkshire**. Established in **December 2011**, initially as **Berkshire Local Enterprise Partnership (LEP)**, the company **purpose** is to **drive** and **support** sustainable **local economic growth**. We do this by **delivering activity** which supports this, including **business support, skills development, careers education services** and **development of strategies**.

We have a **mandate** to deliver the following **Government grant funded programmes** for Berkshire.

| |
|--|
| Berkshire Growth Hub Department for Business and Trade (DBT) |
| Skills Bootcamps Department for Education (DfE, Skills for Life) |
| Berkshire Careers Hub Careers and Enterprise Company (CEC/DfE) |
| LEVI Local Authorities |



Berkshire Growth Hub – delivers fully funded (Department for Business and Trade) support to small and medium sized businesses, from start-up to growth.

Skills Bootcamps – manages the Department of Education funded Skills Bootcamps programme for Berkshire via internal and external providers.

Berkshire Careers Hub – as part of the Careers and Enterprise Company delivers fully funded careers support to educational institutions and young people. Engages with employers and volunteers.

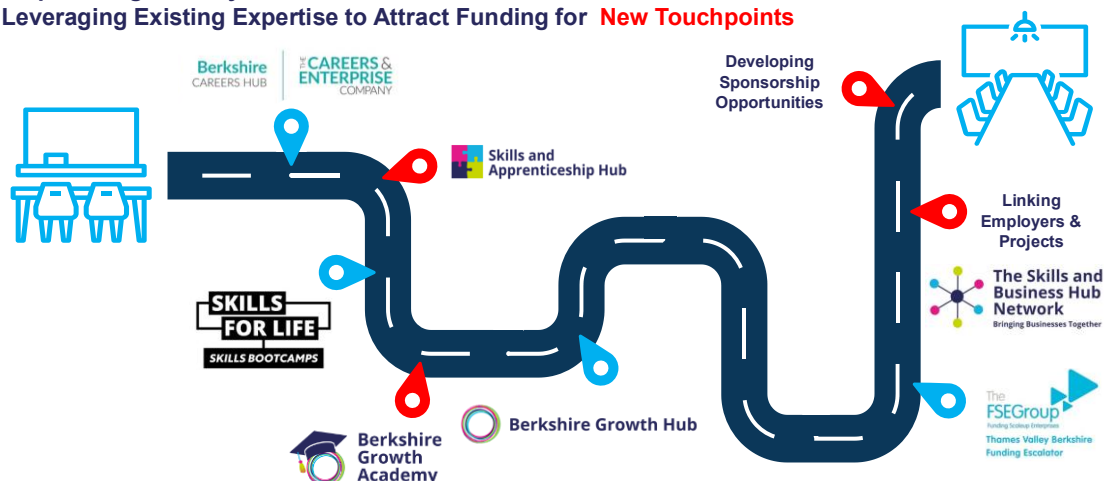
Local Electric Vehicle Infrastructure – We support the Local Electric Vehicle Infrastructure (LEVI) project roll out with Project Management expertise.

The **core purpose** of The Skills and Business Hub is to **drive and support sustainable local economic growth**. We **equip individuals and businesses** with the tools they need to thrive by delivering activity which supports this. We **leverage the three Government funded programmes and attract further funding into Berkshire** though developing new touchpoints. From **education to enterprise**, we serve Berkshire and the surrounding areas as a **trusted partner**.

Supporting individuals and businesses at Every Stage - Key Moments along the way

Empowering Journeys: From Classroom to Boardroom

Leveraging Existing Expertise to Attract Funding for **New Touchpoints**



Our Government Grant Funded Programmes







Here is a bit more detail on each of the Programmes.

Careers Hub

Berkshire
CAREERS HUB

THE CAREERS &
ENTERPRISE
COMPANY

We deliver the Careers Hub in Berkshire through our contract with the Careers and Enterprise Company, the national body for careers education in England

| Aims | Who benefits | Key features |
|---|---|---|
| <ul style="list-style-type: none"> To improve careers education across Berkshire by connecting schools, colleges, and employers Support institutions in delivering high-quality employer encounters, align education with local labour market needs, and help young people make informed decisions about their futures Support high-quality, multiple work experience opportunities for students  | <ul style="list-style-type: none"> Students: access to meaningful career guidance, employer encounters, and pathways aligned with local economic needs Schools and Colleges: structured support, training, and resources to improve careers provision Employers: Engage with future talent, help shape a workforce that meets regional skills demands Teachers and Careers Leaders: Benefit from professional development & industry engagement opportunities through our Teacher Encounters programme  | <ul style="list-style-type: none"> Schools and colleges receive tailored assistance from the local team Strong partnerships with local employers provide real-world insights and opportunities Programmes to align education with industry needs Berkshire Opportunities website supports career exploration with over 10,500 unique users Coordination of 60 volunteer Enterprise Advisers support 87 institutions across Berkshire 99% of state secondary schools, middle schools, all PRUs and SEND schools and FE colleges in Berkshire  |
| Funding source | Key stakeholders | Timescales/commitments |
| <ul style="list-style-type: none"> The programme is funded by the Department for Education (DfE) as part of its national Careers Strategy Annual £100k funding contribution from the Skills and Business Hub  | <ul style="list-style-type: none"> Schools and Colleges in Berkshire Local Employers and Businesses Volunteer Enterprise Advisers from business Careers Leaders and Teachers Local Authorities and Education Providers Government Departments and Funding Bodies  | <ul style="list-style-type: none"> Ongoing Support: Continuous engagement with 87 institutions across Berkshire Annual Induction: 40 new Careers Leaders inducted in September 2024 Sustained Partnerships: Long-term collaboration with employers to ensure consistent and impactful careers education  |

Cornerstone Employers



To support the work of the Careers Hub, we work with Cornerstone Employers to strengthen our delivery. A Cornerstone Employer is a business that is invested in the successful education for young people. We work with our Cornerstone Employers to;

- Offer **Teacher Encounters** to upskill teachers through providing days in industry and visits to workplaces
- Provide **work experience placements** and **careers support** with a particular focus on **disadvantaged young people**
- Lead the way in completing and promoting the national **Employer Standards** self-assessment survey to support **Early Careers**
- Promote **Apprenticeships** and **Technical Education (ATE)** in schools, helping schools to measure impact
- Help schools to achieve the eight **Gatsby Benchmarks**, designed to improve careers education and guidance in schools and colleges
- Provide additional support to **SEND** and **Alternative Provision (AP)** Institutions as well as those with the highest level of **Free School Meals**






In addition to our Cornerstone Employers, we partner with a wide range of employers to provide a range of support to schools including **Teacher Encounters**, **Enterprise Advisers** and **Work Experience**.



Berkshire Growth Hub









We deliver the Berkshire Growth Hub on behalf of The Department for Business and Trade and as part of a network of national Growth Hubs aligned to the national SME Strategy

| Aims | Who benefits | Key features |
|---|--|---|
| <ul style="list-style-type: none"> To provide comprehensive business support to help Berkshire businesses to achieve sustainable business growth Act as a vital link between businesses and national and local policy and initiatives  | <ul style="list-style-type: none"> Small and Medium sized businesses in Berkshire Potential entrepreneurs who want to start a business and those who want to scale up and to provide improvement support to those running a business (help to start, run and grow)  | <ul style="list-style-type: none"> Access to 1:1 meetings with Business Advisers for all businesses Launch: Start-up programme live webinar support for new businesses Grow: 1:1 support for established businesses Scale: intensive support programme with tailored 1:1 support Webinars - learning and skills development Funding – referrals to Funding Escalator (FSE Group)  |
| Funding source | Key stakeholders | Timescales/commitments |
| <ul style="list-style-type: none"> The programme is funded by the Department for Business & Trade and free at point of delivery to SMEs Historically, this DBT grant has been further levered through use of ERDF and UKSPF (highly successful pan-Berkshire three-year programme funding ceased March 2025)  | <ul style="list-style-type: none"> Local Businesses, SMEs and potential entrepreneurs Department for Business & Trade (DBT) Local Authorities, particularly economic development teams Sector representative groups Business Improvement Districts Employer representative bodies Other government agencies, e.g. Innovate UK, British Business Bank  | <ul style="list-style-type: none"> Ongoing Support: Continuous engagement with businesses in Berkshire Regular updates and enhancements to align with evolving business needs and Government policy changes Annual funding cycle  |

Skills Bootcamps



We are the managing authority for Skills Bootcamps in Berkshire, responsible for the delivery through a network of Independent Training Providers and Colleges

| Aims | Who benefits | Key features |
|---|---|--|
| <ul style="list-style-type: none"> Skills Bootcamps provide flexible, employer-led training programmes lasting up to 16 weeks Offering sector-specific skills and fast-track for participants to new opportunities or interviews with employers, or upskill them to enhance job opportunities or promotion Programme addresses the needs of LSIP priority sectors and local areas of skills shortages and delivers aspects of the Berkshire Economic Strategy action plan  | <ul style="list-style-type: none"> Employed, unemployed, or self-employed or co-funded by their employer to attend a Skills Bootcamp Adults aged 19+ with the Right to Work in UK Berkshire businesses able to develop and recruit talent required for growth and subsidise their training  | <ul style="list-style-type: none"> Skills Bootcamp Courses help Berkshire Local Authorities deliver in key areas identified in the LSIP and BES: <ul style="list-style-type: none"> Business Engineering and Construction Education Digital and Data Sustainability All Bootcamps are subject to OFSTED inspection  |
| Funding source | Key stakeholders | Timescales/commitments |
| <ul style="list-style-type: none"> The programme is funded by the Department for Education (DfE)  | <ul style="list-style-type: none"> Department for Education Local Authorities Employers Training Providers Participants (employed, unemployed, self-employed)  | <ul style="list-style-type: none"> The programme will deliver aspects of the Berkshire Economic Strategy action plan for 2025/26 onwards  |

Thames Valley Berkshire Funding Escalator

Skills Bootcamp Courses delivered in Berkshire

Supporting skills shortage areas identified in the BES and LSIP



Business

Project Management | Leadership and Management | AI for Business | Entrepreneurship | Sales



Engineering and Construction

Civil and Highways Engineering | Welding Engineering | Telecoms Engineering | Construction and the Built Environment



Education

Teaching Assistants - Supporting SEND needs in the classroom | Pathway to Accelerated Apprenticeships in Early Years



Digital and Data

Data Analytics with AI | Software Developer | Digital Marketing with AI | Generative AI for Business | Digital Innovator | Cyber Security | High Performance Full Stack Software Developer









Sustainability

Retrofit - Domestic Energy Assessment | Retrofit Assessment | Solar Photovoltaic and Electrical Energy Storage Systems design, installation, service and maintenance | Design and Installation of Air Source Heat Pump | Domestic Ventilation Systems Design, Installation, Services and Maintenance | Low Temperature Heating and Domestic Heat Networks | Sustainability and Carbon Management

Local Electric Vehicle Infrastructure

We support the Local Electric Vehicle Infrastructure (LEVI) project roll out with Project Management expertise



| Aims | Who benefits | Key features |
|--|--|---|
| <ul style="list-style-type: none"> • Support local authorities to improve the roll out and commercialisation of public EV charge points • Coordinate activity to achieve common goals and deliver pan-Berkshire activity, e.g. 11 July Pan - Berkshire EV experience event  | <ul style="list-style-type: none"> • Berkshire residents without off-street parking and a need to charge their EVs • Berkshire local authorities, e.g. intervention by the coordinator enabled 5 of the 6 Berkshire LAs to be green lit by EST or procurement prior to change in public procurement rules, saving an average of £12k each in the process.  | <ul style="list-style-type: none"> • Bimonthly LEVI meetings sharing learning and best practice • Shared Knowledge Management platform for pan Berks LEVI • Monthly Scottish and Southern Electricity Networks (SSEN) meetings to review Grid capability • Secure optimum pan Berkshire economies of scale, where appropriate  |
| Funding source | Key stakeholders | Timescales/commitments |
| <ul style="list-style-type: none"> • A capital grant scheme administered by Office for Zero Emission Vehicles (OZEV) and a capability grant provided to each of the six Berkshire LAs  | <ul style="list-style-type: none"> • Skills & Business Hub • Berkshire local authorities • Office for Zero Emission Vehicles (OZEV) • Charge Point Operators (CPOs)  | <ul style="list-style-type: none"> • Funding for the pan Berkshire LEVI Project Manager until March 2026 • Additional £22m of LEVI capability funding recently allocated to local government could fund pan-Berkshire LEVI Project Manager role until March 2027  |

The Funding Escalator was established to:

- Support **high-growth businesses** unable to secure traditional financing
- Provide **projection-led funding**, unlike banks that focus on historical funding
- Create and safeguard jobs in Berkshire. **These jobs would not exist without the funding escalator**
- Drive regional productivity growth
- Collaborate with SME finance ecosystems and **inject private sector capital** into supported businesses
- Become an '**evergreen**' loan fund to support **Berkshire's economic prosperity**



TVB Funding Escalator Mission:

Thames Valley Berkshire Funding Escalator

Debt Funds £50,000 - £500,000

The Thames Valley Berkshire Funding Escalator is a £11.3m initiative funded by Berkshire LEP. The escalator consists of an expansion loan scheme & a short-term trade loan scheme, which provides eligible companies with funding for activities that will deliver high-growth and employment opportunities across Berkshire. View our portfolio of supported businesses [here](#). For business support and growth advice in Berkshire, reach out to our partners at Berkshire Growth Hub.

Use of funds



Berkshire LEP invested Growing Places Fund into a revolving loan to address the funding gap by investing in high growth businesses, enabling sustainable economic growth across the Thames Valley Berkshire area



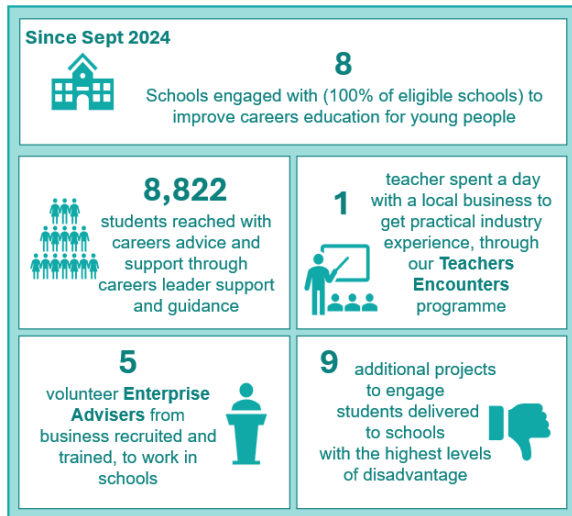
Preferred Sectors for investment aligned to the Berkshire Economic Strategy:

Life Sciences & Healthcare, Digital Tech, Creative Industries and Energy (Green environmental)



Our delivery in Bracknell Forest

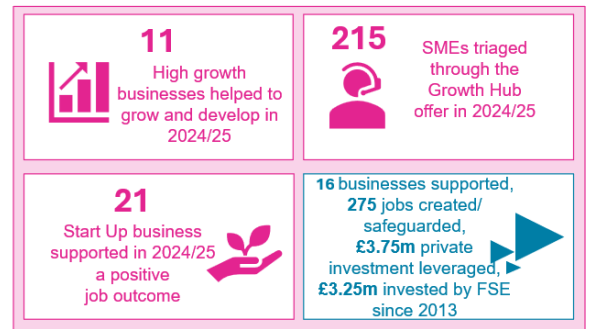
Careers Hub



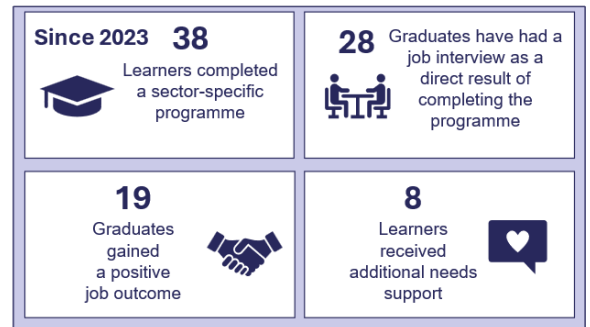
LEVI



Growth Hub Funding Escalator

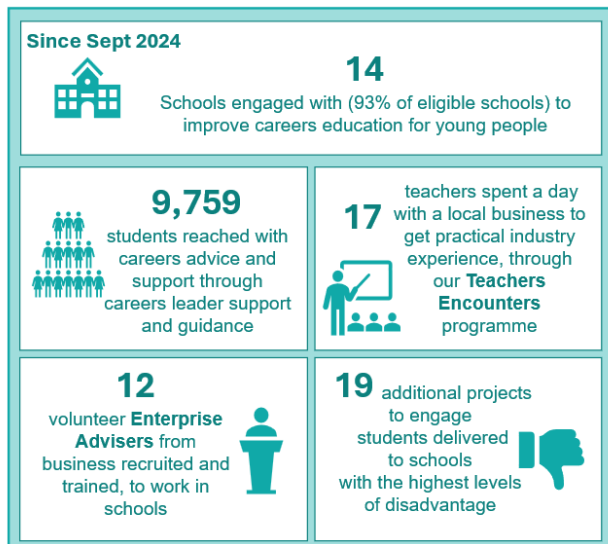


Skills Bootcamps



Our delivery in Reading

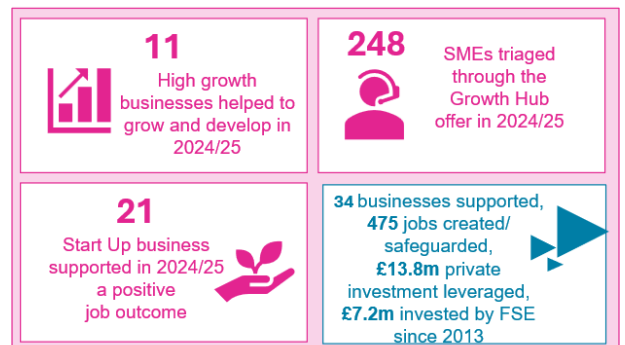
Careers Hub



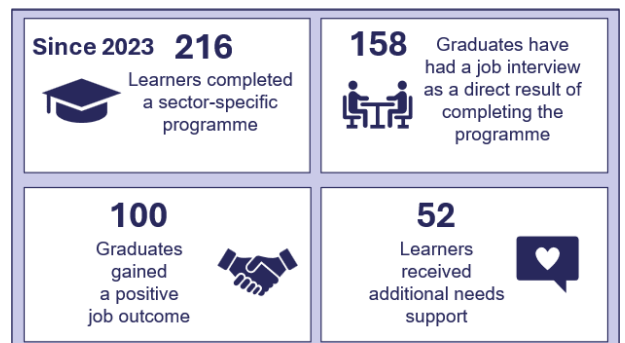
LEVI



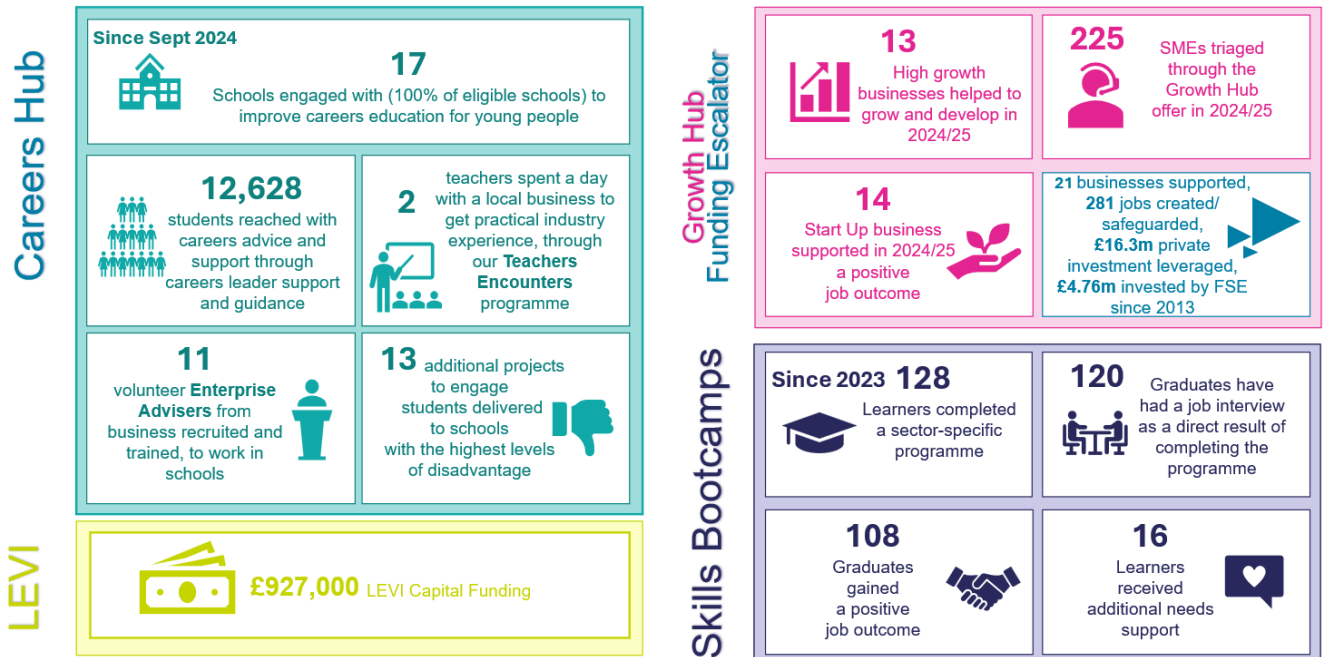
Growth Hub Funding Escalator



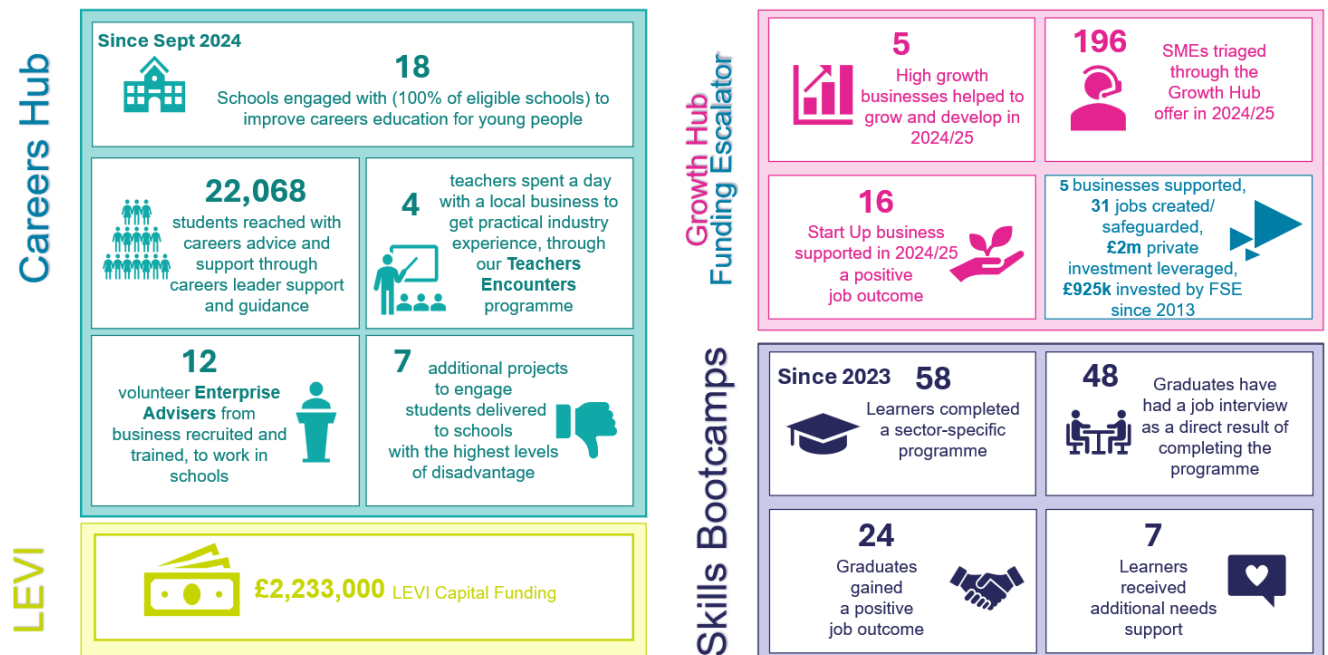
Skills Bootcamps



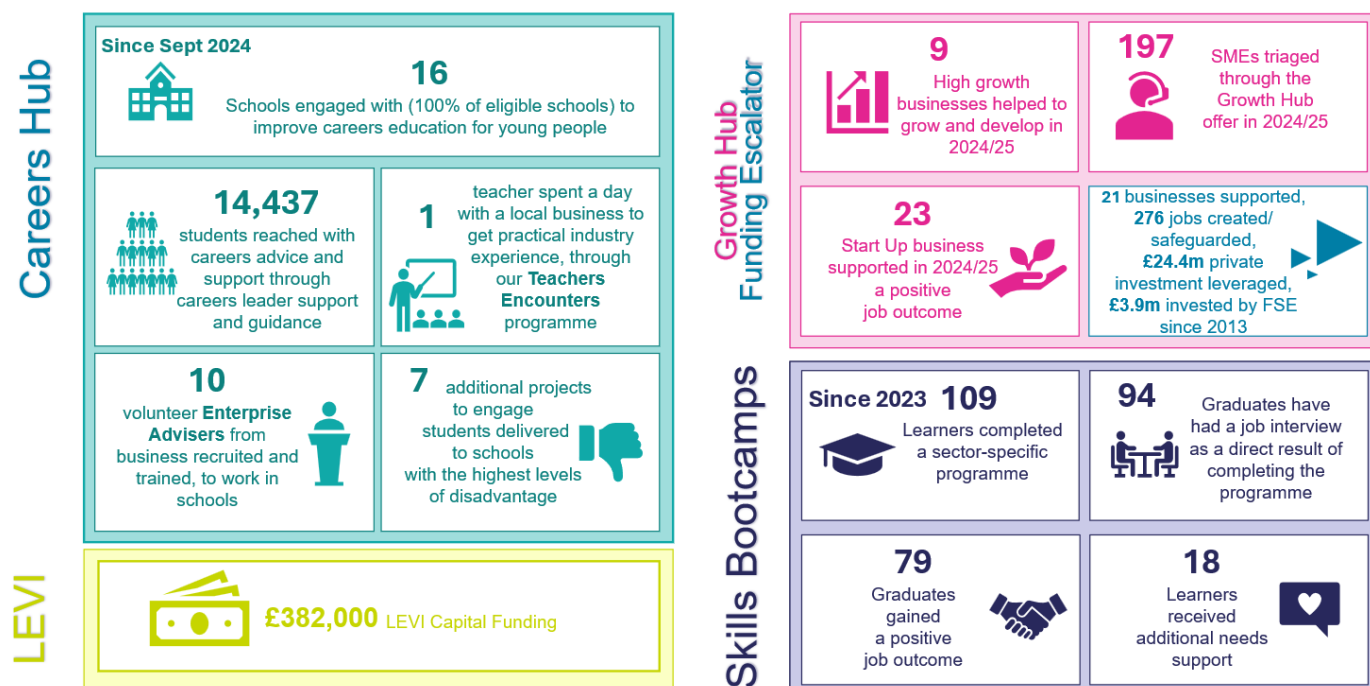
Our delivery in Royal Borough of Windsor & Maidenhead



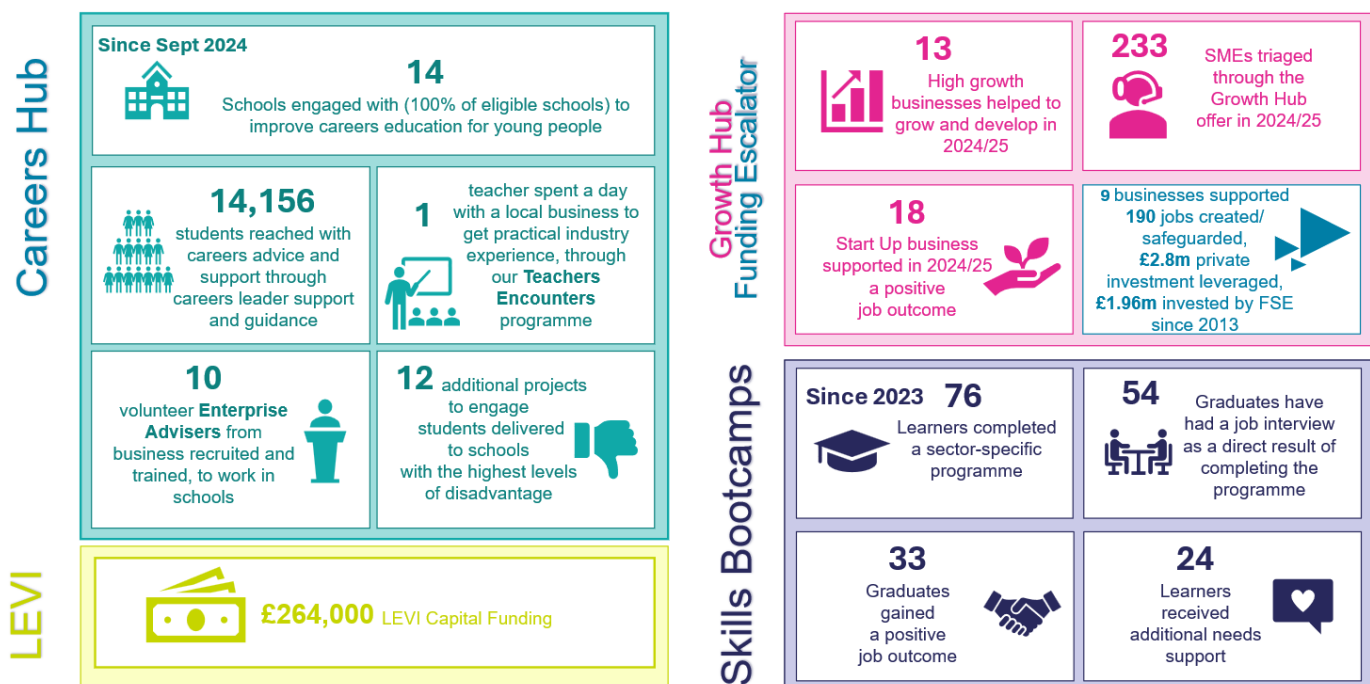
Our delivery in Slough



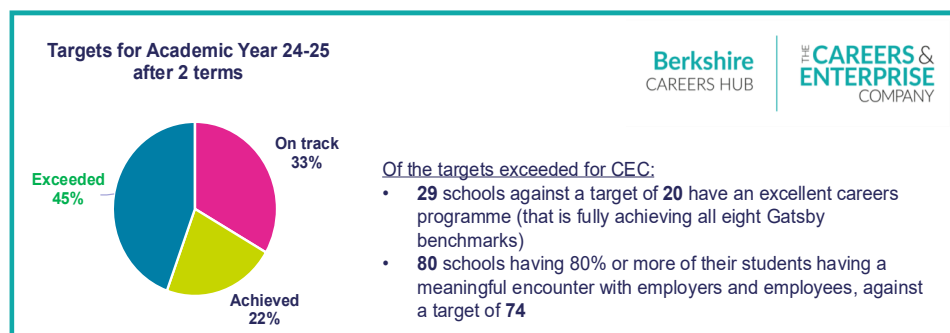
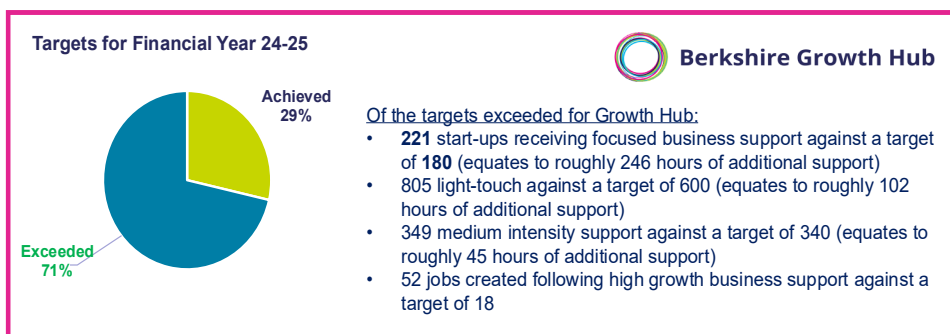
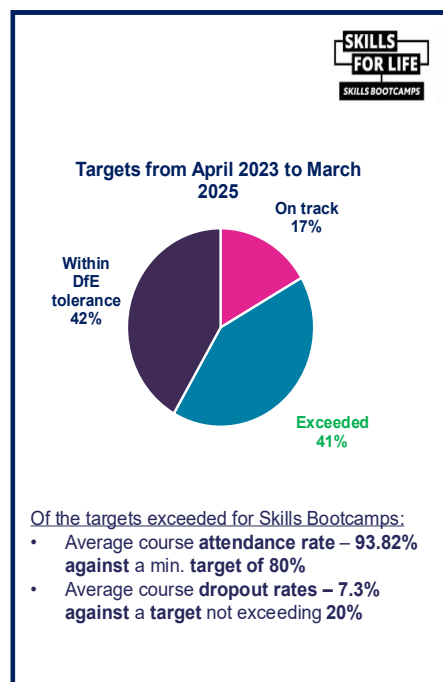
Our delivery in West Berkshire



Our delivery in Wokingham



And the overview of our programme results against Government Grant requirements, many of which exceed expectations



Local Authority Input

How The Skills & Business Hub makes a difference



Delivery

- Our strong **delivery record** and **continued achievement of targets** (always in **top 5 delivery partners**, often number 1)
- We **start** some **programmes** “**at risk**”. Funding is received after delivery has started.
- Because we are **small** we are very **nimble** and were the **first to deliver wave 6 Skills Bootcamps** courses in the UK
- **Lean operating model**: a small expert team which **consistently deliver to targets**
- Our **provision** is **inclusive** and **accessible**



Relationships

- We **work closely** with all our **key stakeholders** to ensure the **programmes align with local needs**
- We are a **trusted delivery partner** by **Government** through prior delivery and engagement, enabling us to **increase Skills Bootcamps Funding 5 fold**
- We created **strong bonds** with **Colleges** where **Skills Capital** investments were made, and they are now **delivery partners for the Skills Bootcamps**



Resourceful

- We **subsidise the Careers Hub** as CEC funding requires a direct match (**annual investment = £100k**)
- We find **solutions** where **funding** is a **challenge**: e.g. Our **Growth Hub** and the **BES Action Plan** identified a clear requirement to run **Entrepreneurship** courses, was addressed using **Skills Bootcamps funding**
- We **leverage** the **interconnectivity** of our **programmes** to fill gaps. E.g. Running **Sales Skills Bootcamps** where **gaps in skills** were **identified** by the **Growth Hub**

Whilst many of our Government Grant Funded Programme delivery parameters are set, there are areas where the Local Authorities can influence at a Berkshire-wide level to better meet their priorities.

Local Authorities have opportunities to influence programme delivery by The Skills and Business Hub to meet local priorities

Delivery:

Appoint a Local Authority representative on CEC Steering Group which sets priorities and direction



Delivery:

The BES and Business Board determine the local priority sectors to support.

Note: 50% of local Skills Bootcamp funding can be allocated to deliver in any sector or skill area needed locally outside those deemed a national priority for the Skills Bootcamp programme

Timing for input: August for following Financial Year



Delivery:

BES, Business Board and Local Authorities can help determine the local priority sectors for targeted support.



Investment in preferred sectors:

Funding Escalator is targeting priority sectors identified in the BES. Potential for Business Board to influence through the Scrutiny Group (which has Local Authority representation)



Testimonials

Delivery against targets is great, but the real satisfaction is hearing the wonderful experiences of those involved, be it learners, employers, or delivery partners. Below is a very small selection of feedback.

Careers Hub testimonials

Berkshire
CAREERS HUB

THE **CAREERS &
ENTERPRISE**
COMPANY

Supporting Schools' Initiatives

"The consistent relationship we have with the Berkshire careers hub has helped our school's Careers Leader to test ideas and shape new initiatives. Work related learning has been one of our areas of focus and Berkshire Careers Hub colleagues have supported us to step up our activities in the past year.

We've been able to introduce work experiences for years 10 and 12. All our year 10 students have been involved in work experience and work -related learning. One of our new initiatives was a 2-day project with a local care home, looking at the wide range of roles involved from healthcare to business. Our latest evaluation of the Gatsby benchmarks, carried out in conjunction with our Enterprise Coordinator, shows we are now meeting benchmark 6 (experiences of workplaces) at 100%.

We have also been supported to bring guest speakers into school and to introduce more focus on apprenticeships. Our Careers Leader has lots of ideas so having the support of the Careers Hub team, with its breadth of knowledge and experience, has led us to increasing our careers offering."

Katie Moore, Executive Principal at King's Academy, Binfield and King Academy, Oakwood (Bracknell)

Teachers Encounters

"I had an invaluable day learning so much more about the tech industry and what Egnyte looks for and I look forward to bringing this back to share with our students, inspire them and guide them about their options for the future."

Lalita, Careers Team, Activate Learning (Reading)

"Thank you Gita Bhandari, Dean Clark and Donna Payne for supporting Teachers and Careers Leads in showering us with a wealth of knowledge on employment opportunities with Mars. Trust me when I say, I was totally blown away seeing behind the scenes of Mars. AMAZING!"

Linda Derby, Careers Adviser, Berkshire College Of Agriculture (RBWM)

Collaborating for Careers Leader Support

"Thanks to our work with the careers hub we've been able to really drive careers education forward. By utilising the careers hubs resource as a network, we have enhanced our careers provision. The majority of our schools are now 100% Gatsby benchmark compliant. We've been supported with links into workplaces too, which has increased our activities around apprenticeships and technical education.

Rob Buck, Director of Maiden Erlegh Institute and Trust Professional Learning (Wokingham)

Supporting Alternative Provision

"The Berkshire Careers Hub has been invaluable providing staff training attending employer meetings and sharing beneficial events for icollege. Their extensive knowledge and local connections are tremendous assets. Our termly compass+ meetings help keep icollege well connected."

Ali Haynes, Careers and PHSE Lead, icollege (Newbury)

Empowering School Governors

"The Berkshire Careers Hub has been crucial in my role as careers link governor at Desborough school. Their guidance has helped us embed careers education into the curriculum and meet Gatsby benchmarks, ensuring our students receive the best advice on careers and opportunities."

Emma O'Connor, Vice Chair of Governors, Desborough College (RBWM)

Supporting Alternative Provision

"The Berkshire Careers Hub has been a great source of information to help me support out students. In addition, it has provided opportunities for collaboration with other settings to share best practice and improve what we offer"

James Whybra, Deputy Headteacher and Careers Leader, The Castle School (West Berkshire)

Some Growth Hub testimonials



Berkshire Growth Hub

"Since I discovered Growth Hub at the end of 2024 I have been truly impressed by the services and support available. Since then I attended quite a few sessions and found them very helpful and empowering. I would recommend Growth Hub to anyone who is either at the start of their business journey or needs some support or simply talk through things. It still amazes me how much support is available through GH, from 1-2-1 sessions, Lunch & Learn, to start up programme and bootcamps. It is truly amazing and definitely more people should hear about you and the range of services available!"

Izabella Jakubowska, Grace In Colour Studio (Reading)

"I have found the Growth Hub extremely useful. Being a new inexperienced business owner, I have found the sessions and recommendations from Sara invaluable.

Having a local business advisor that has 'been there and done it' and who can advise on the business essentials for small business owners has been a godsend at a critical time of the business. I also enrolled on the AI for business online course, which was well structured and a useful insight into the rapid changes that AI is having to the business world."

Simon Miller, Managing Director, Focal Point Advertising (West Berkshire)

"Very grateful for the focused help with creating a business plan to progress a grant application. The sessions I have had provided clear and actionable tasks to help with setting up a business. I'm grateful for the advice, resources and opportunities I've had since finding the Berkshire Growth Hub. The staff have a genuine interest in what they do and go out of their way to assist small businesses grow. Thank you so much!"

Sheena Bulpitt, Shenna Bulpitt Fine Art (Slough)

"I was so happy when I discovered Berkshire Growth Hub - it feels like I have somewhere to go for impartial advice, help and support. I have gained valuable suggestions from the 1-2-1 video calls I have had with Sara Charlesworth. She's brilliant! I am buzzing with ideas and motivation afterwards and she steers me in the right direction with fabulous sound advice. It's free and they have my back and I am extremely grateful for this."

Dawn Barnes, Corporate Wellbeing (Bracknell)

"Working with Lesley at the Growth Hub has been an absolute pleasure. She listened attentively to my business needs and provided insightful suggestions that truly helped me refine my target audience in ways I hadn't considered before. I was struggling to address certain aspects, but Lesley's guidance made the process much clearer and more manageable. Additionally, her willingness to meet up again for a follow-up demonstrates her commitment to supporting businesses like mine. Overall, my experience with the Growth Hub, especially with Lesley, has been invaluable to my business growth journey".

Stanley Innocent, OfficeTech Setup Services Ltd (RBWM)

"The support provided is fantastic. Being a business owner can be quite lonely at times, so it's great to have a place where you can turn for support and guidance when needed. The training is also incredibly helpful, equipping you with all the tools to succeed."

Mark Summers, Summers Print and Promotions (Wokingham)

Skills Bootcamps testimonials

Learner Voices

"The update to date knowledge that received helps us to stay relevant and find new avenues of work, especially in the renewables area. Talking to other people in the industry is one of the best parts of it. It's what we're interested in and it's well worth it."

Daniel Corkin, Retrofit Skills Bootcamp, Langley College (RBWM)

"The Skills Bootcamps programme provides valuable, practical training directly supporting professional development and career readiness. It offers a fast-tracked, focused approach to gaining essential skills for SEN roles, making it an excellent alternative to traditional qualifications."

Swati Waghmare, Skills Bootcamp for SEN professionals with Educate2gether Training (Slough)

"The Skills Bootcamp helped me develop my written skills through things like e-mail marketing and gaining certificates through completing the extra learning materials through the Semrush Academy. I have gained more confidence to identify my strengths and tailor aspects of my CV to match job descriptions."

Shanjida Begum, Skills Bootcamp In Digital Marketing, The Curious Academy (Reading)

Employer Testimonials

"We truly believe in the Skills Bootcamps programme. We've already recruited two graduates, and their skills are making a real difference in our business!"

The Skills and Business Hub (Berkshire)

"The bootcamps have created a pipeline of local people with the right skills to help us thrive in the future. This initiative has really boosted our company's ability to stay relevant and competitive in the fast-changing construction industry."

Cara Beeby, CEO, BuildTech (Wokingham)

The skills bootcamps provided by Newbury college have been invaluable in filling a skills gap identified in our graduate community as it is uncommon for them to have gained 'hands on' experience during their degrees. The quality of the course in all aspects has been exceptional and enabled these early careers staff to work more efficiently across the business by understanding the design to manufacture process in its entirety. We have also taken the opportunity to roll this boot camp out to established staff to upskill them as a part of career development."

Julie Symonds, Future Talent Manager, AWE (West Berkshire)

Delivery partner feedback

"A heartfelt thank you to the Berkshire Local Enterprise Partnership skills bootcamp team for trusting Matt and I to deliver the data analytics and digital marketing programmes which allow us to work with some amazing people."

Louize Clarke, Co-owner, The Curious Academy (Reading)

"I love them. We've had a long-standing relationship. Alison's great. Joanna's great. You know, Claire is brilliant. The team of the data guys, they're just lovely and they're wonderful. They have my total support, and I love working with them".

Jo Houghton, Vice Principal – HE and Skills, Newbury College (West Berkshire)

Funding Escalator Testimonials



Reading

"At the time we received debt funding from FSE, it was the only reasonable option we had to get our **project off the ground** – a project that would have been abandoned without this support. As a result, we are now working with leading pharmaceutical companies and are currently raising £3m equity to **power our growth**. Thanks FSE!"

Dan Hydes Co-founder & Managing Director



Slough

Borrowing money of any sorts is a daunting prospect and in business terms there always follows an arduous process. In the case of FSE we felt **very much supported** through the application process and help was on hand whenever we needed it from the team; indeed as a client we asked a lot of questions and these were all dealt with in a detailed and respectful way. Communication from the team at FSE has been clear and concise, and we have found a **genuine interest** in our business, its plans and its developments."

Nicola Bell – Motion Simulation



West Berkshire

"Our relationship with FSE has been **crucial** not only to our growth but to our survival. In 2017, with sales around £0.5million, our Investment Manager took the time to understand our business and was able to provide funding when conventional banking could not. Seeing the possibilities rather than the problems, FSE continued to stand by us through the significant challenges brought about by the pandemic and a further loan helped to keep the business going. With FSE's support we have **increased employee numbers** we continue to trade internationally and, with our loans now repaid, we are on track to reach **£5million** turnover this year. We are so grateful that we found in FSE a true funding partner that enabled this unique technology to survive and thrive."

Andrew Bride / Group Finance Director, Torftech



Bracknell Forest

"As a relatively early stage business there are limited options to raise funding from mainstream finance providers, but The FSE Group **fills this gap** with their funding for newer companies that are looking to expand. We're delighted to be working with them as we enter the next phase of our growth journey; their support will be **instrumental** in helping us reach new customers and continue to promote the incredible work of independent UK roasters."

Fiona Jones, Co-Founder at Beans Coffee Club



Wokingham

"The support we've received from the FSE Group over the years has been **instrumental** in Quintex's growth and success. From the early stages of our development to where we are today, their funding has enabled us to innovate, expand, and stay ahead in a competitive market **More than just financial backing** the FSE Group brought a deep understanding of our vision and offered strategic insight that proved invaluable along the way. We're truly grateful for their belief in our potential and their commitment to helping UK businesses thrive."

Emma Brooks, Managing Director at Quintex



Windsor and Maidenhead

"At a time when the bank wasn't interested and just told me 'don't even bother filling out the forms', my FSE fund manager was **very responsive, professional, friendly and helpful**. But at the same time he was straight, honest and challenging- something I hadn't experienced with any other finance house but which made me feel he was **genuinely interested**. I have been used to a complete lack of communication, being kept at arm's length by a faceless entity. I believe FSE **saved my business** had it not been for this organisation I would have gone bust in year one."

Austin Bailey- Lacka Foods

Funding Escalator Case Studies:

Reading

Slough

West Berkshire



Supporting



The Enterprise
IgniteData's Archer technology is transforming the way hospitals and research sites transfer patient data for clinical trials.



Sector:
data

The Funding
A £300,000 loan in 2019 helped hire key executives and further develop their product offerings.



Funding:
£300,000

Company recently raised a \$8million seed round, which was led by US based Health Tech VC SpringTide.

Supporting



The Enterprise
Creators of leading-edge, digital solutions that support Pharmaceutical companies



Sector:
software

The Funding
Most recent funding in 2023 with a £125,000 loan to help support the hiring within the sales function and to assist with further product development.



Funding:
£325,000 across two loans

Supporting



The Enterprise
A design engineering and intellectual property business.



Sector:
industrial machine manufacturing

The Funding
A £200,000 loan in 2017 helped the business expand into new sectors and locations.



Funding:
£200,000

Company has now in 2024 completed 132 projects worldwide.

Supporting



The Enterprise
A leading UK MedTech company fighting blindness and disability with pioneering technology



Sector:
community

The Funding
A £350,000 loan in 2023 to assist with the further commercialisation of their technology.



Funding:
£350,000

Company won the BioTech Company of the Year and Pharma Contract Services Company of the Year at the Pharma Industry Awards in 2024

Supporting



The Enterprise
Creators of the world's first variable driving position racing simulator.



Sector:
design engineering

The Funding
A £200,000 loan in 2015 has helped the business expand its offering and management team.



Funding:
£200,000

Supporting



The Enterprise
An award winning social advertising consultancy



Sector:
advertising

The Funding
Most recent loan of £200,000 to assist with the on-going expansion of the business.



Funding:
£690,000 across 4 loans

Won the Most Effective UA Platform at the Mobile Marketing Awards in 2023.

Funding Escalator Case Studies:



Windsor and Maidenhead

Supporting

Lacka Foods

The Enterprise
A lifestyle health food & drink company specialising in nutritional convenience.

The Funding
A £300,000 loan in 2013 helped the business to launch their products in supermarkets nationally.

Company was acquired by Weetabix Food Co in 2022

Sector: food & drink

Funding: £300,000

Wokingham

Supporting

Quintex
Energy & Grease Management Solutions

The Enterprise
A provider of energy saving and grease management solutions, with over 8000 systems installed in the UK and Europe in a variety of sectors

The Funding
A £150,000 loan in 2022 helped the business to fund the sales and marketing expansion of their team, creating a number of new positions. Most recent funding £300,000 in March 2025.

Sector: b2b services

Funding: £500,000

Bracknell Forest

Supporting

my first uk

The Enterprise
Specialist car insurance for first time drivers

The Funding
A £105,000 loan in 2019 helped the business to ramp up their expansion strategy with national marketing campaigns.

Recently named in the Sunday Times fastest growing businesses 2024.

Sector: insurance

Funding: £105,000

Supporting

MyWorkSpot

The Enterprise
A provider of flexible office and Coworking space to start-ups & established businesses.

The Funding
A £280,000 loan in 2022 to help the company to fit out and launch their new site in Maidenhead town centre.

Sector: real estate

Funding: £280,000

Supporting

each person

The Enterprise
A provider of flexible office and Coworking space to start-ups & established businesses.

The Funding
A £500,000 loan in 2023 to help support continued software development and enable the recruitment of 7 local hires

Sector: software

Funding: £500,000

Supporting

lookingglass

The Enterprise
A full-service marketing agency working in the commercial property sector

The Funding
A £300,000 loan in 2019 allowed the business to scale and hire new staff across multiple departments.

Sector: design activities

Funding: £300,000



The Skills and Business Hub

Contact us

MyWorkSpot Proxima
1 Grenfell Road
Maidenhead
SL6 1HN

info@skillsandbusinesshub.org

Connect with us



Skills-and-business-hub

skillsandbusinesshub.org



HM Government